

Xtensa pure, rectangular

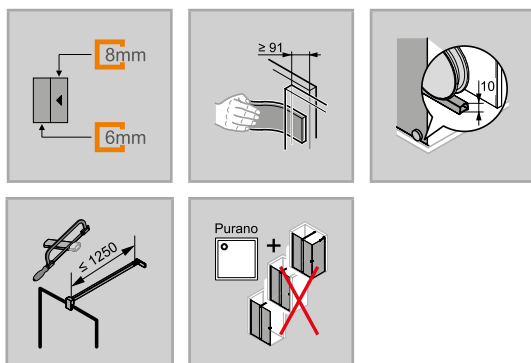


Walk-In sliding door, 1-panel with fixed segment

Product description

- Free standing, for installation in a recess or for combination with side panel.
- Partially framed Walk-In with a sliding door segment, opening to one side only, with a partially framed fixed segment.
- Glazing with 6 mm (fixed segment) and 8 mm (door) single-pane safety glass according to DIN EN 12150, optionally with the easy-care HÜPPE Anti-Plaque surface finish.
- Optionally with 90° cross bar or 45° stabilizer (inside).
- High-quality and especially slim wall profile made of aluminium.
- Select+ wall profile and ceiling connection can be ordered optionally.
- Adjustable in the wall profile 12 mm. Additionally up to 200 mm via the overlapping glass elements.
- Incl. HÜPPE sealing system – mounting without visible screws in the area of the wall profile.

An even/flat surface of 50 mm must be available.



Installation options XT02	
Walk-In with cross bar	
In recess with cross bar	
For side panel with cross bar	
Min.-max. dimensions	
1200-2200	1000-2000

- Internal flush-fitting roller guides facilitate easy cleaning.
- High-quality roller guides made of polished stainless steel – flush-fitting on the inside and adjustable in height.
- Floor profile (height 10 mm).
- Continuous magnetic strips and sealing profiles.
- Sealing according to DIN 14428.
- Made in Germany.
- Ten-year availability guarantee on wear parts after purchase of the product.
- Quality assurance system certified according to DIN EN ISO 9001:2015.
- Energy management certified according to DIN EN 50001:2011.
- Included in delivery: Fastening materials. Cleaningtool. Installation instructions.

Dimensions		
WL:	20	16
R:	38	20
MG:	47	47

WEM = tray installation dimension (000)
M = Installation dimension middle of floor profile, sliding door (001)
Please always specify when ordering.