

Design pure, rectangular



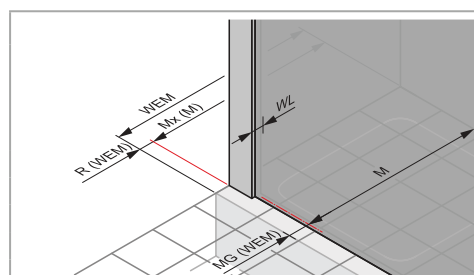
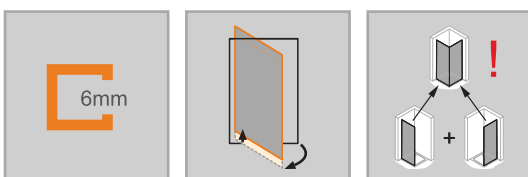
Folding swing door, corner entry

Product description

- For installation in recess and for combination with side panel or as corner entry.
- Partially framed door with two glass panels, can be swivelled 90° inwards and outwards on the tubular hinge, 180° outwards on the hinge.
- Glazing with 6 mm single-pane safety glass according to DIN EN 12150, optionally with the easy-care HÜPPE Anti-Plaque surface finish.
- Profiles made of high-value anodised aluminium. Handle and hinges made of high-quality metal.
- Handle, hinge and drip deflector strip always in high-gloss silver, except for Black Edition, White Edition.
- Fittings with rise-and-fall mechanism.
- Slopes possible.
- Adjustable in the wall profile 15 mm.
- Tubular hinge with continuously adjustable rise-and-fall mechanism and 5 mm lifting effect.
- With drip deflector strip (height 10 mm) for optimum watertightness, or as easy-entry unit.
- Continuous magnetic strips and sealing profiles, as well as water-repellent horizontal sealing strip.
- Sealing according to DIN 14428.
- Made in Germany.
- Included in delivery: Fastening materials. Installation instructions.
- Ten-year availability guarantee on wear parts after purchase of the product.

Recess profile is required for folding swing doors in recess or door combined with shortened side panel.
Slopes possible. For recess solutions, always with straight-cut profile on closing side.

Installation options 8P08	
Recess = door + profile set for recess installation	
Corner solution = door + side panel	
Corner entry = door + door	
Min.-max. dimensions	
1400-2000	500-1250



Dimensions

WL:	30
R:	15
Mx:	M+15
MG:	30

WEM = tray installation dimension (000)
M = Installation dimension middle of glass (001)
Please always specify when ordering.