

# Design pure, rectangular



Folding swing door, corner entry

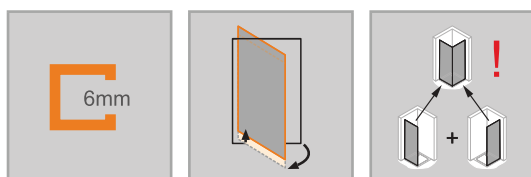
## Product description

- For installation in recess and for combination with side panel or as corner entry.
- Partially framed door with two glass panels, can be swivelled 90° inwards and outwards on the tubular hinge, 180° outwards on the hinge.
- Glazing with 6 mm single-pane safety glass according to DIN EN 12150, optionally with the easy-care HÜPPE Anti-Plaque surface finish.
- Profiles made of high-value anodised aluminium. Handle and hinges made of high-quality metal.
- Fittings with rise-and-fall mechanism.
- Handle, hinge and drip deflector strip always in high-gloss silver, except for Black Edition, White Edition.
- Slopes possible.

- Adjustable in the wall profile 15 mm.
- Tubular hinge with continuously adjustable rise-and-fall mechanism and 5 mm lifting effect.
- With drip deflector strip (height 10 mm) for optimum watertightness, or as easy-entry unit.
- Continuous magnetic strips and sealing profiles, as well as water-repellent horizontal sealing strip.
- Sealing according to DIN 14428.
- Made in Germany.
- Included in delivery: Fastening materials. Installation instructions.
- Ten-year availability guarantee on wear parts after purchase of the product.

**Recess profile is required for folding swing doors in recess or door combined with shortened side panel. Slopes possible. For recess solutions, always with straight-cut profile on closing side.**

Installation options 8P09	
Recess = door + profile set for recess installation	
Corner solution = door + side panel	
Corner entry = door + door	
Min.-max. dimensions	
1400-2000	500-1250



Dimensions	
WL:	30
R:	15
Mx:	M+15
MG:	30

WEM = tray installation dimension (000)  
M = Installation dimension middle of glass (001)  
Please always specify when ordering.