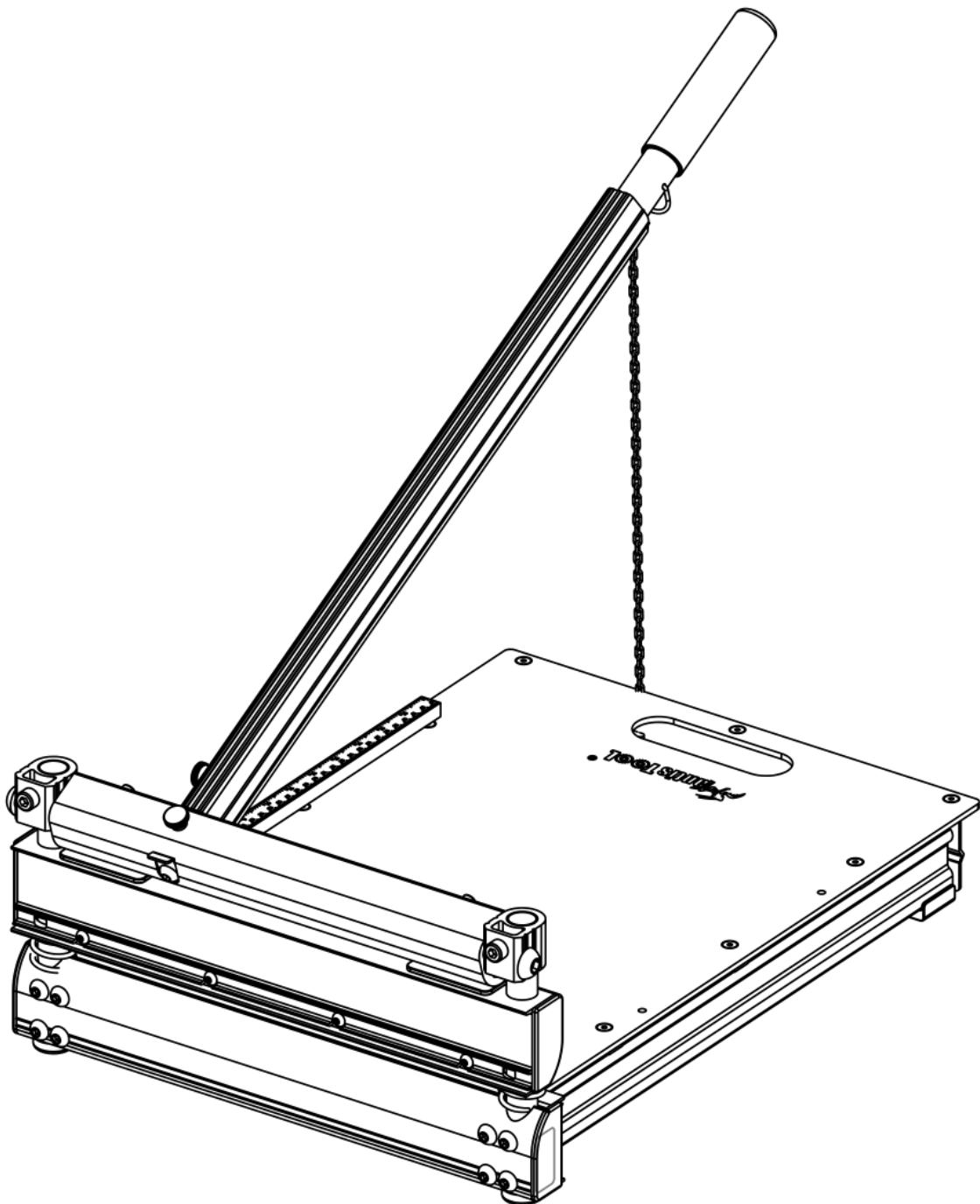


# MANTIS TOOL<sup>®</sup>

## OPERATION MANUAL

---

Carpet tile-vinyl flooring Cutter MC-330





**WARNING: FAILURE TO FOLLOW THESE RULES MAY RESULT IN SERIOUS INJURY! USING THIS MACHINE WITH RESPECT AND CAUTION WILL CONSIDERABLY LESSEN THE POSSIBILITY OF PERSONAL INJURY.**

---

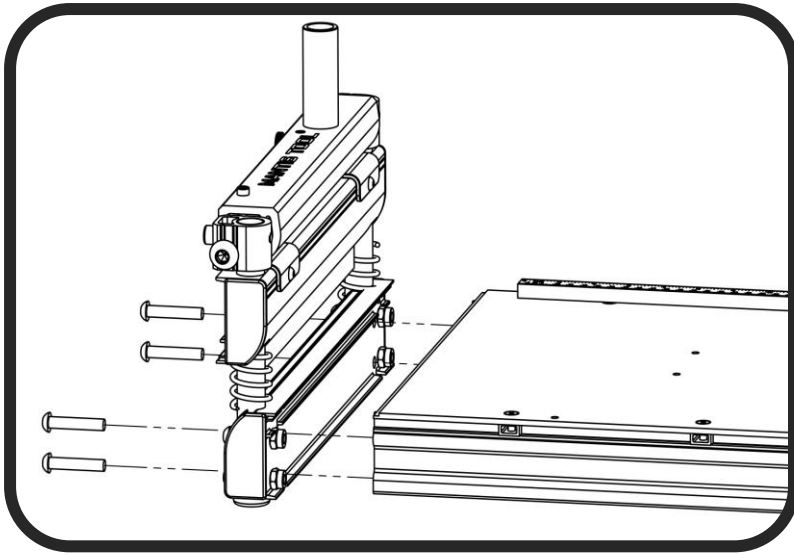
## **SAFETY**

### **RULES FOR THE FLOORING CUTTER**

- 1. READ AND UNDERSTAND THIS INSTRUCTION MANUAL BEFORE OPERATING THE MANTIS TOOL CARPET TILE CUTTERS.**
2. If you are not thoroughly familiar with the operation of MANTIS TOOL Multi-flooring Cutter, obtain advice from a qualified instructor or call 086-021-31229623 CHINA
3. Stay alert. Do not operate while under the influence of drugs, alcohol, or medication.
4. Always wear safety approved eye protection with side shields(ANSI Z87.1)
5. Keep work area free of debris.
6. Keep children and unauthorized persons away from the MANTIS TOOL flooring Cutter and work area.
7. Make sure tool is secure. Operate only on a firm substrate or solid stand.
8. Use the right tool. Do not force the MANTIS TOOL flooring Cutter or use it for a job for which it was not designed; use only on approved materials.
9. Keep the blade sharp. A dull blade will not perform properly.
10. Always keep hands away from blade while operating or carrying the cutter.
11. Do not alter or misuse this tool. The MANTIS TOOL flooring Cutter is precision built; modifications not specified in this manual may result in a dangerous and unsafe environment.
12. Maintain the MANTIS TOOL flooring Cutter with care. Keep Blade sharp and clean. Follow instructions for changing accessories.
13. Use only recommended accessories. The use of improper accessories may be hazardous and cause injuries.
14. Never leave the MANTIS TOOL flooring Cutter unattended. Secure the handle with the lock chain when not in use.



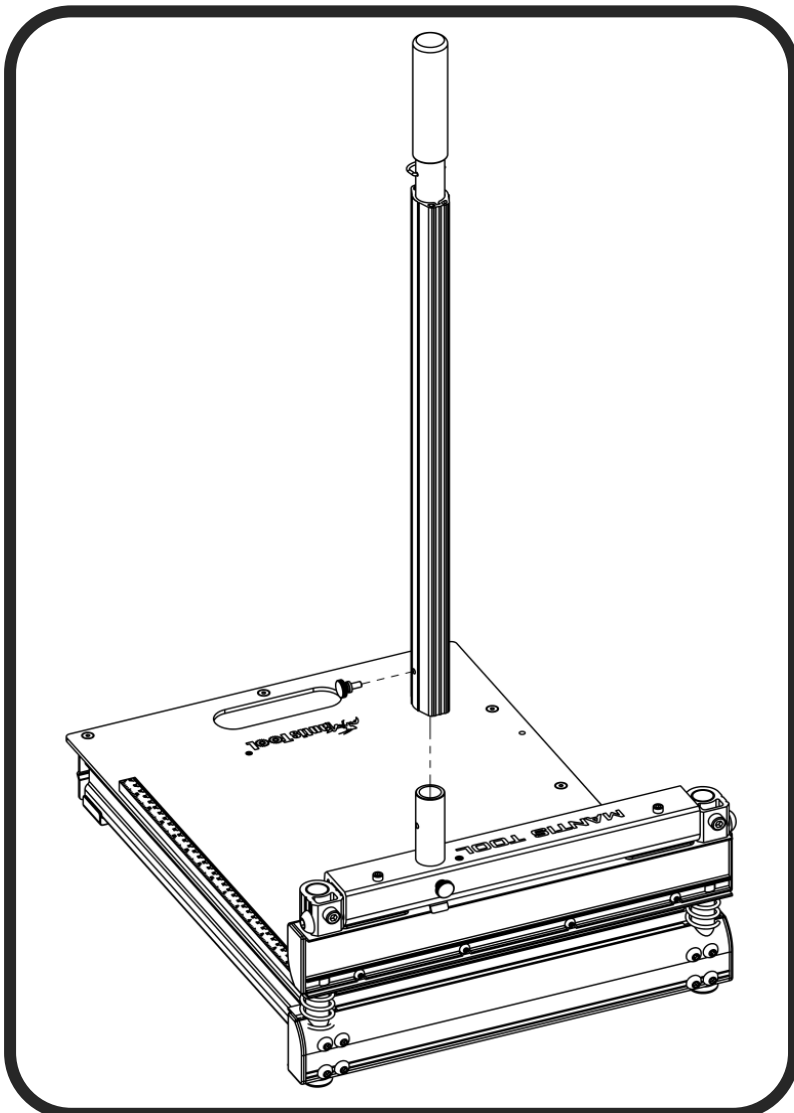
## SET UP



### Installation of the cutter

Install the table to the cutter base with the provided screws and bolts as shown.

**Warning:** Do not put your fingers against the sharp edge of the blade at any time.

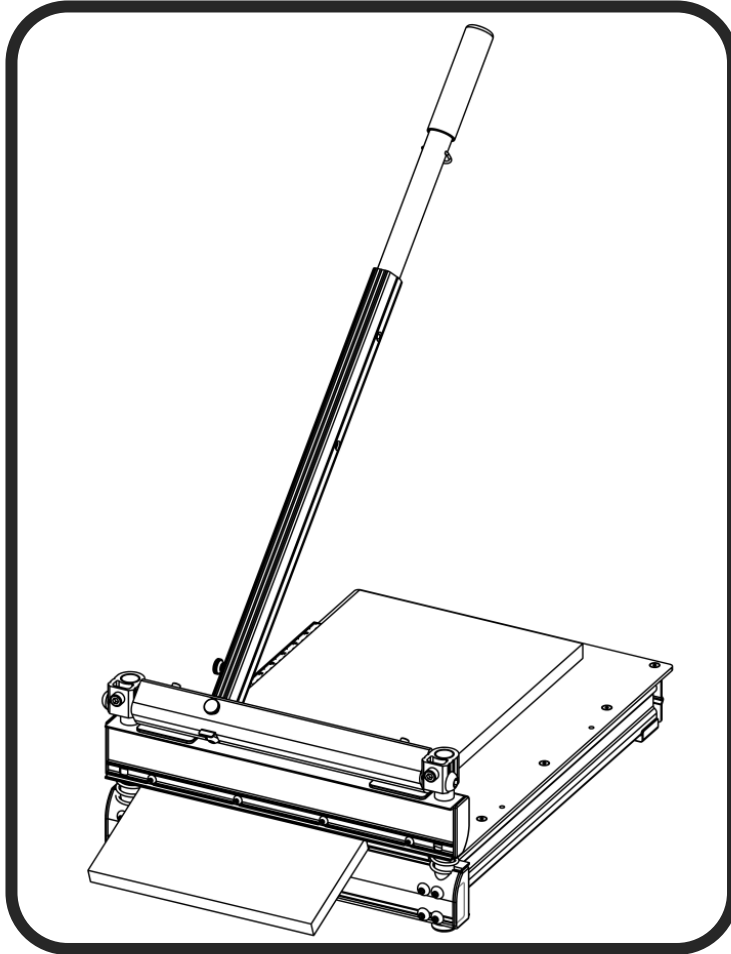


### Installation of the Cutter

Press the handle down and then pull out the lock pin from the side frames as shown.

**Warning:** Do not put your fingers against the sharp edge of the blade at any time.

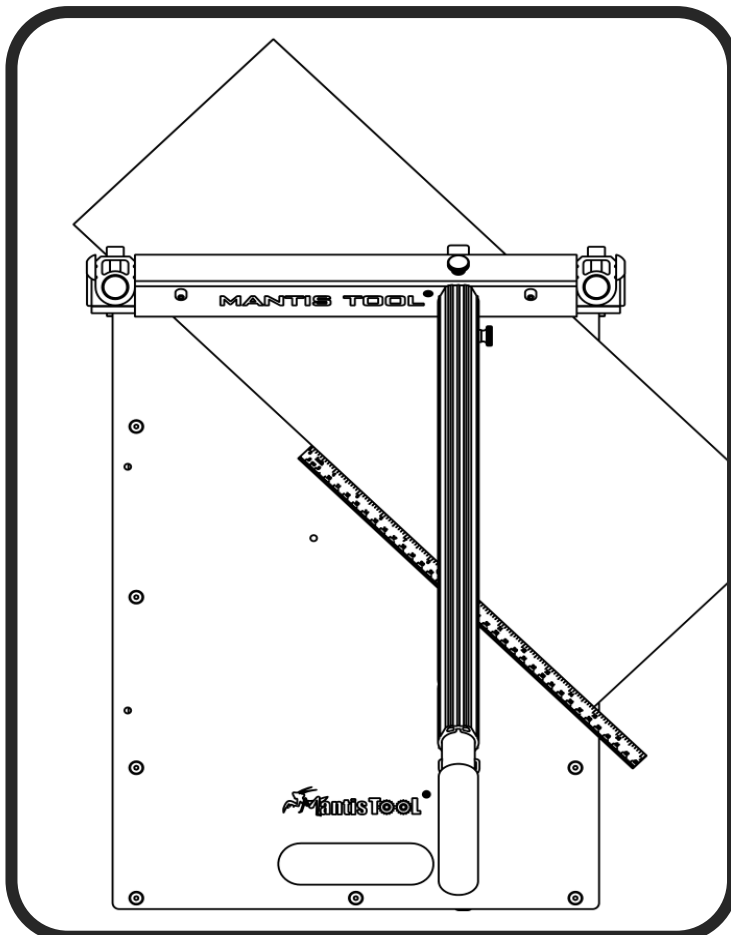
# CUTTING



## Straight Cutting

Insert material between the cutting blade and the base, flush with the angle attachment as shown and hold the material with foot then push handle down to complete a cut.

**Warning:** Maintain control of the handle. Do not allow handle to slam back after making a cut.



## 45 ° Cutting

Swing the angle attachment to 45 °. Insert material between the cutting blade and the base, against the angle attachment as shown, then push the handle down to complete a cut.

**Warning:** Maintain control of the handle. Do not allow handle to slam back after making a cut.



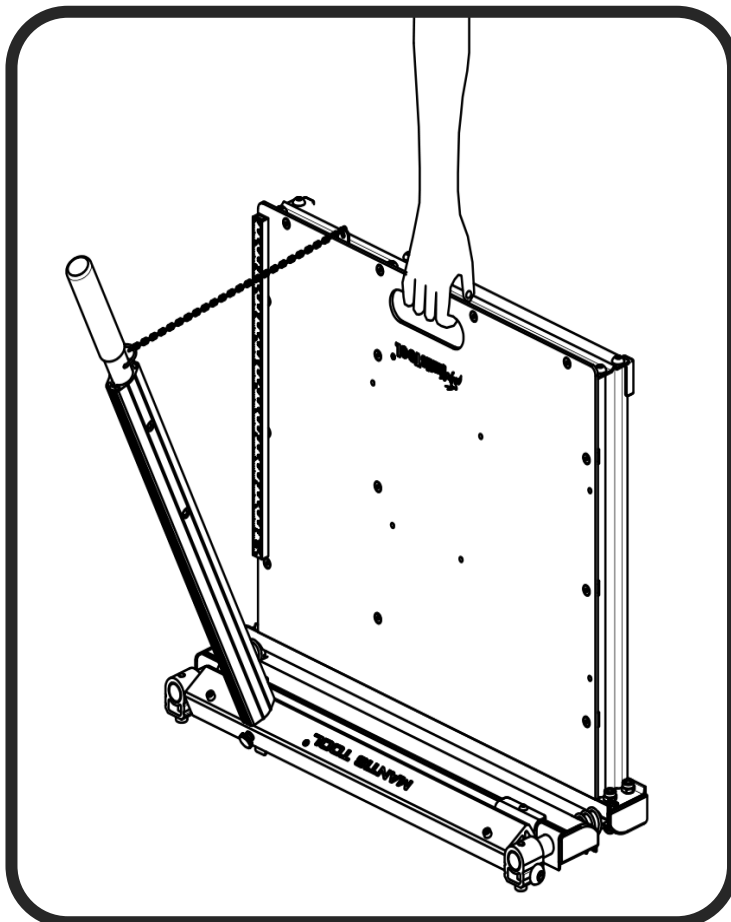
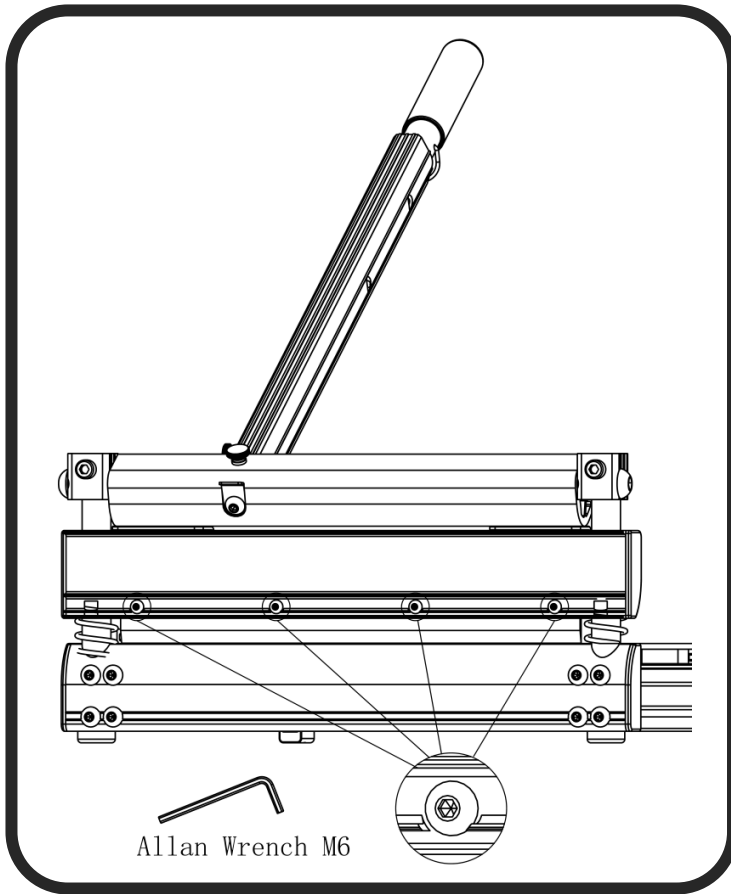
# MAINTENANC

## Changing the Blade

Use the provided Allan wrench to remove the nine screws, then hold the blade by each end and carefully move the blade out of blade holder.

**Note:** the flat side of the blade facing the table.

**Warning:** Do not put your fingers against the sharp edge of the blade at any time.

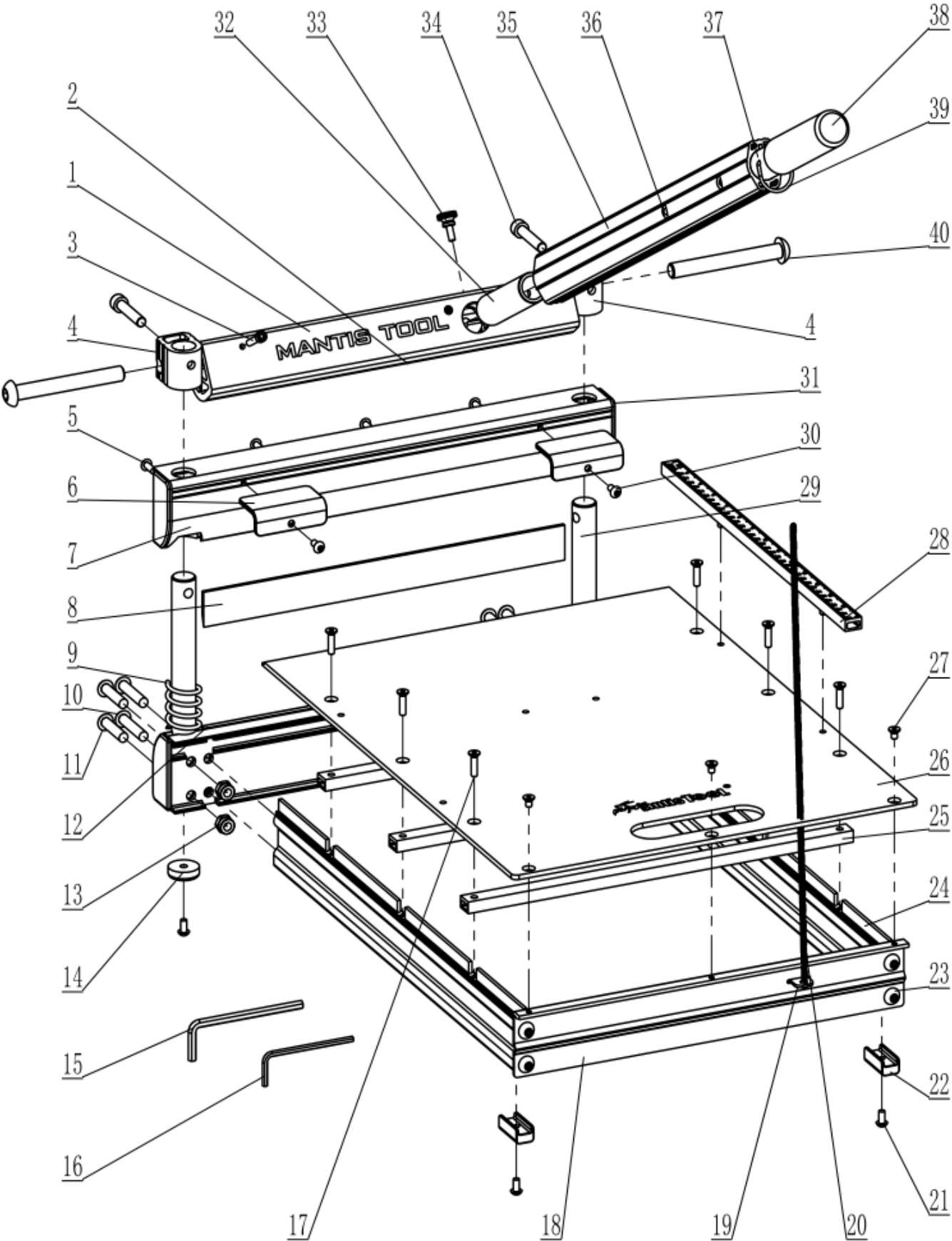


## Carry

Hook the chain to the ring on the handle and carry the cutter as shown.



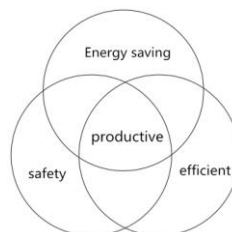
# PART LIST





# PART LIST

	Parts	Q'ty		Parts	Q'ty
1	Eccentric Cam	1	28	Cutting Guide	1
2	Eccentric Cam Stopper	1	29	Guide Rod	2
3	Bolt M5×25	2	30	Bolt M5×10	2
4	Eccentric Cam Base	1	31	End Frame Base A-B	2
5	Bolt M6×14	4	32	Handle Base	1
6	Eccentric Cam Protection Pad	2	33	Bolt M5×16	1
7	Blade Cutting Base	1	34	Bolt M8×40	2
8	Blade	1	35	Handle-A	1
9	Spring	2	36	V- shrapnel	1
10	Bolt M8×40	4	37	Handle-B	1
11	Bolt M8×35	4	38	Handlebar	1
12	Nylon bar	1	39	Hook-A	1
13	Nut M8	4	40	Rotating Shaft A-B	2
14	Rubber Feet	2			
15	Allan Wrench M8	1			
16	Allan Wrench M6	1			
17	Hex Head Screw M5 × 20	6			
18	End Table Frame	1			
19	Hook-B	1			
20	Chain	1			
21	Bolt M4×8	2			
22	Rubber pads	2			
23	Bolt M8×10	4			
24	Working Table Frame	2			
25	Working Table Bar	3			
26	Working Table	1			
27	Hex Head Screw M5 × 8	3			



Made in:  
Shanghai, China  
Tel.Nr: +86- 021-31229623